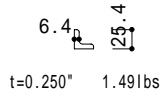
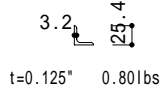
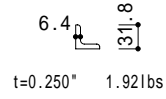
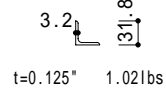


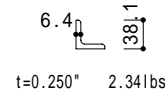
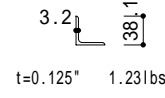
EA0  
3/4" x 3/4"



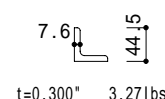
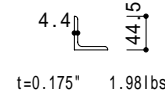
EA1  
1" x 1"



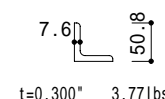
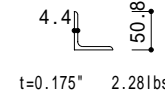
EA2  
1-1/4" x 1-1/4"



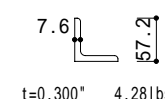
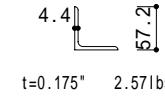
EA3  
1-1/2" x 1-1/2"



EA4  
1-3/4" x 1-3/4"

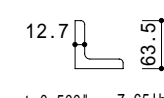
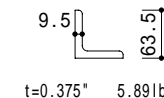
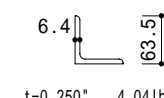


EA5  
2" x 2"

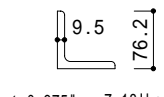
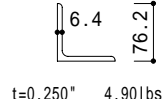
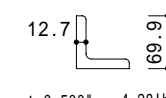
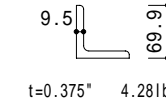
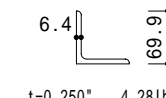


EA6  
2-1/4" x 2-1/4"

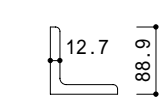
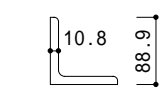
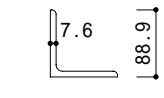
EA7  
2-1/2" x 2-1/2"



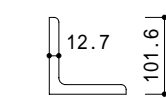
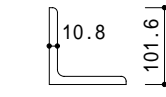
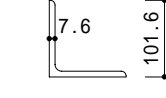
EA8  
2-3/4" x 2-3/4"



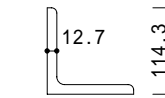
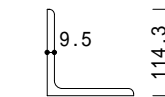
EA9  
3" x 3"



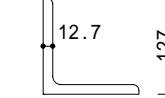
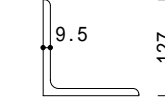
EA10  
3-1/2" x 3-1/2"



EA11  
4" x 4"

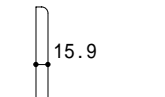
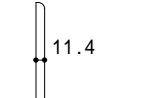


EA12  
4-1/2" x 4-1/2"



EA13  
5" x 5"

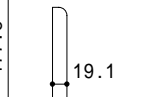
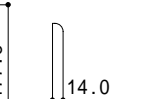
EA14  
6" x 6"



EA15  
7" x 7"



EA16  
8" x 8"



## 等辺山形鋼製品断面

製品目録(大正14年版)より

lbs : 1feetあたりの重量

1feet = 12inch = 304.8mm

1pound = 0.45359237kg