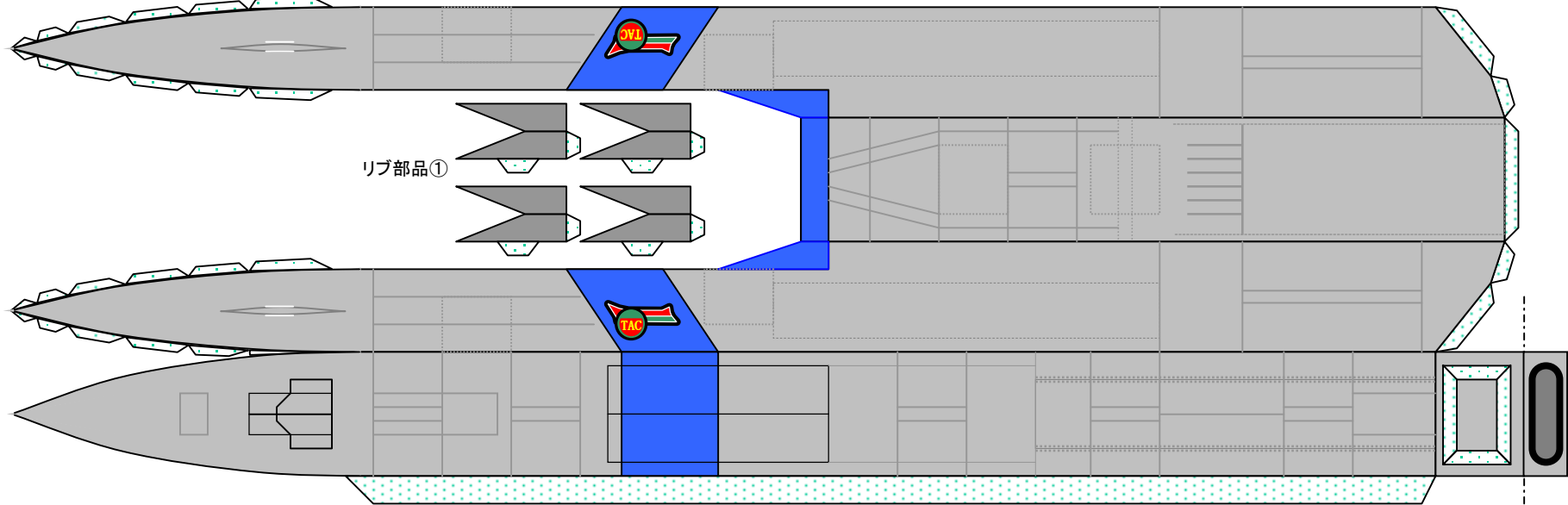
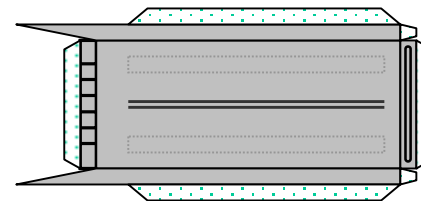
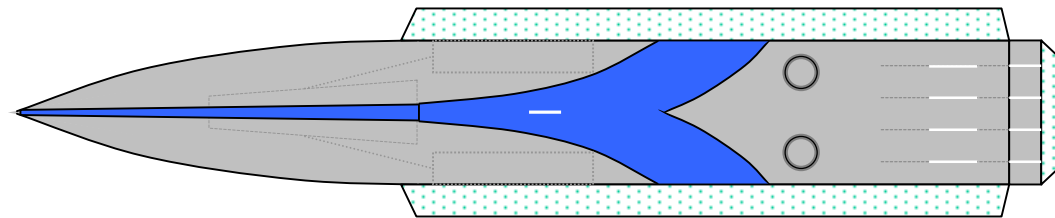


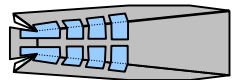
# タックファルコン①



リップ部品①



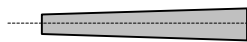
機体後部



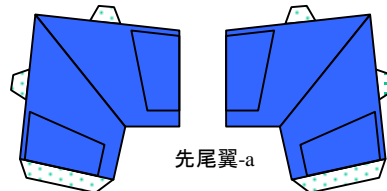
コックピット



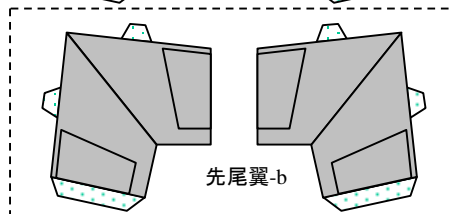
アンテナ



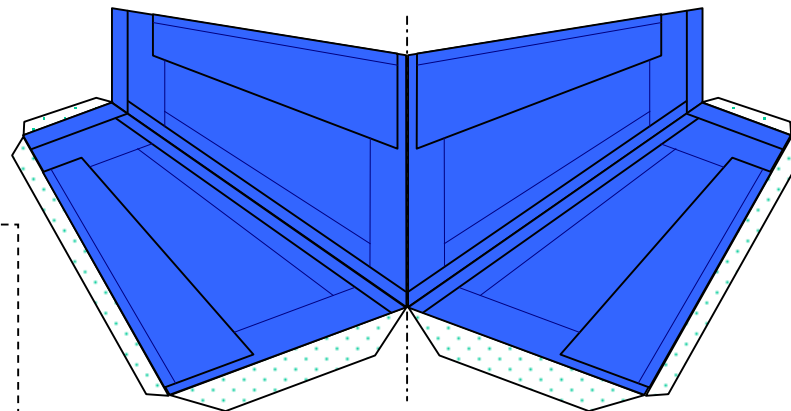
ピトー管



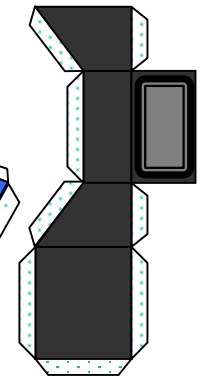
先尾翼-a



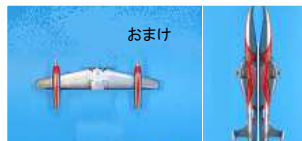
先尾翼-b



尾翼



エンジンノズル



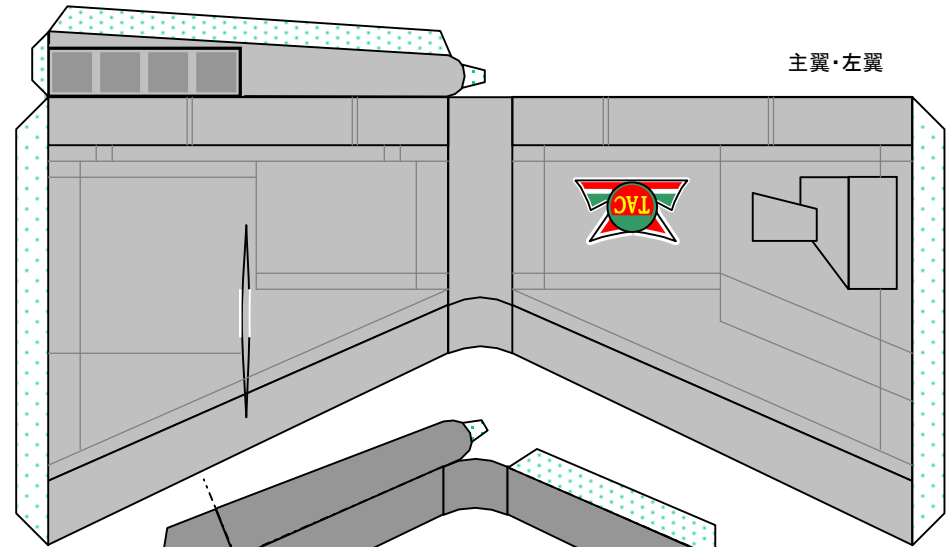
おまけ

# タックファルコン②

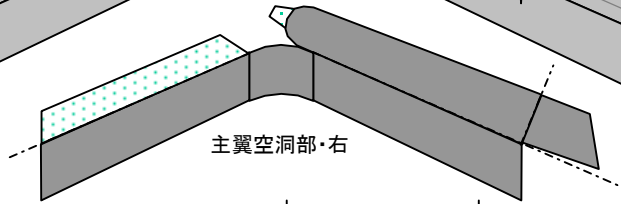
主翼・右翼



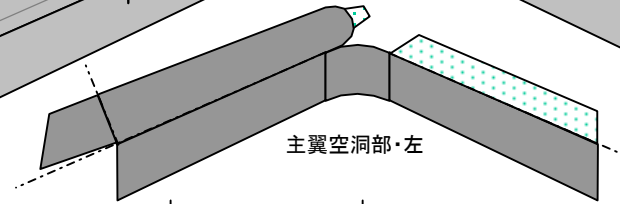
主翼・左翼



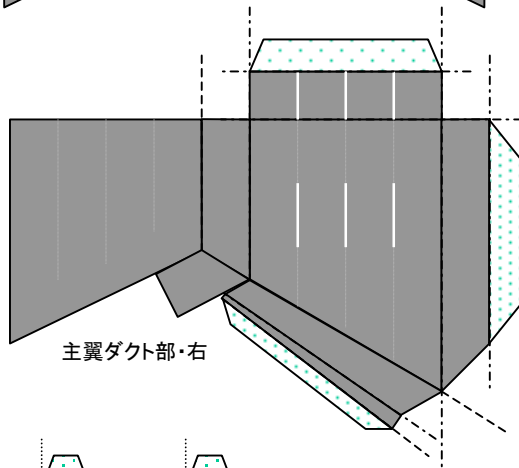
主翼空洞部・右



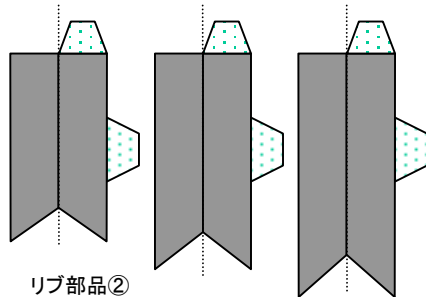
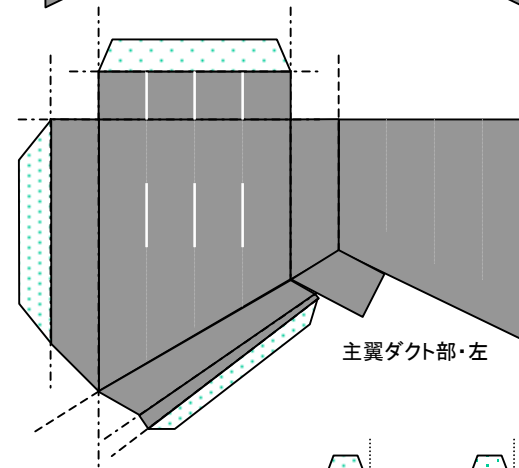
主翼空洞部・左



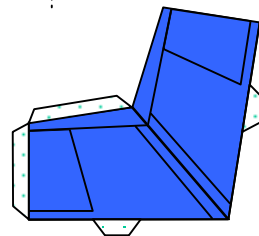
主翼ダクト外部・右



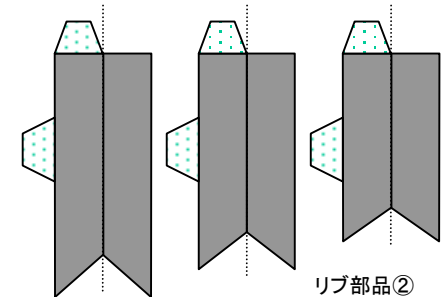
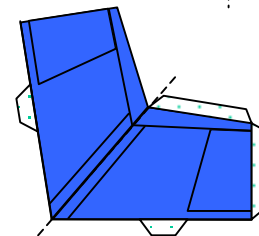
主翼ダクト外部・左



リブ部品②



垂直尾翼



リブ部品②